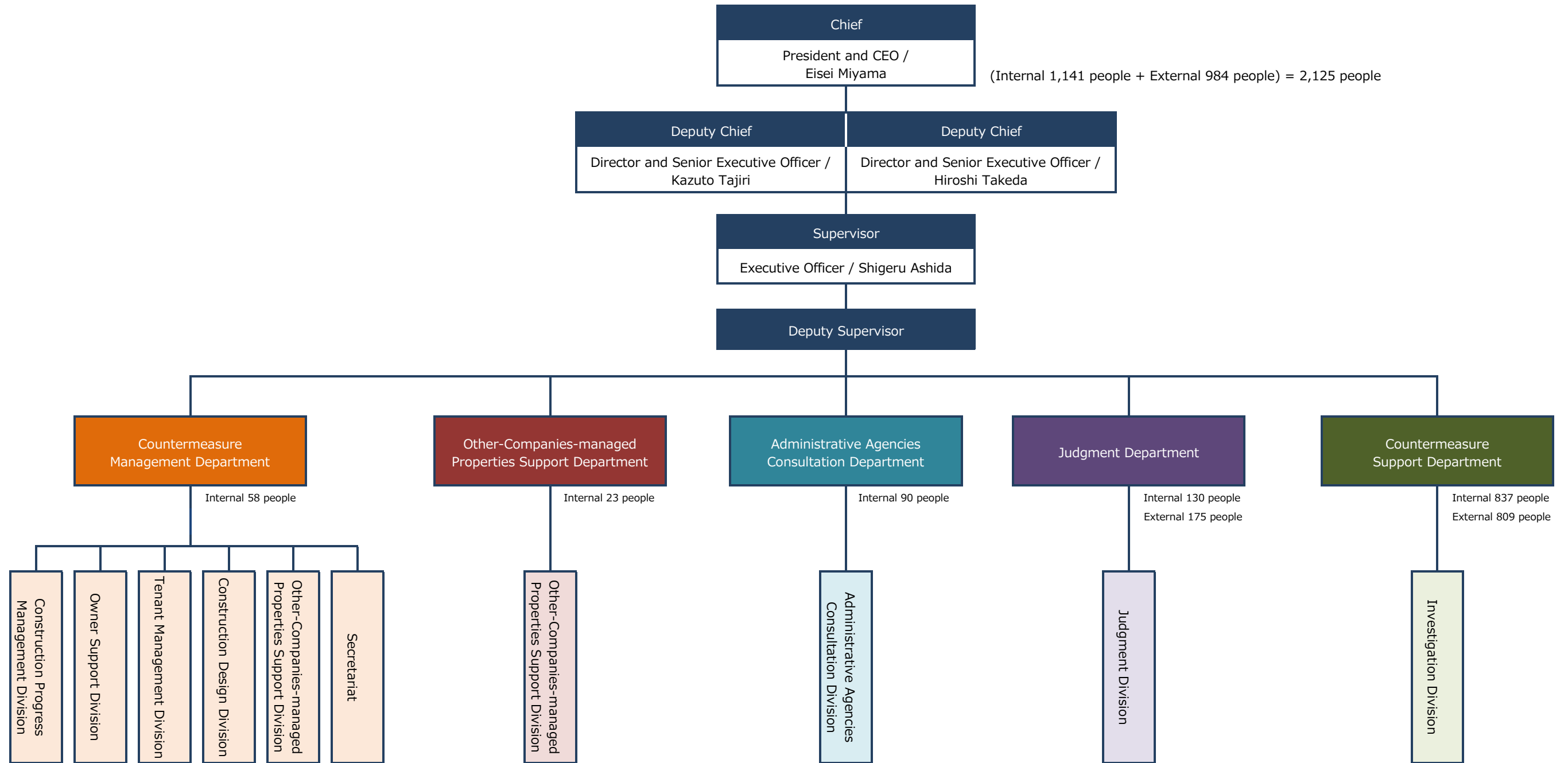


Organizational structure of Emergency Headquarters for Construction Defects



Countermeasure Management Department	Other-Companies-managed Properties Support Department	Administrative Agencies Consultation Department	Judgment Department	Countermeasure Support Department
58 people	23 people	90 people	305 people	1,646 people
<ul style="list-style-type: none"> - Progress management of investigations and repair works, investigation schedule management - General support of owners and tenants - Preparation of investigation documents and floor plans for reporting - Consultations with administrative agencies - General support of properties managed by other companies - Information disclosure (internal and external) 	<ul style="list-style-type: none"> - General support of properties managed by other companies 	<ul style="list-style-type: none"> - Submitting documents and reporting to specific administrative agencies - Consultations with specific administrative agencies 	<ul style="list-style-type: none"> - Judgment of properties after investigations - Preparation of reporting documents after investigations 	<ul style="list-style-type: none"> - Investigation and repairs of properties managed by Leopalace21 - Investigation and repairs of properties managed by other companies